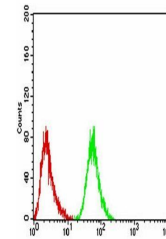


Product Datasheet

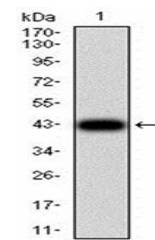
RF1 Antibody (orb333891)

Description	Mouse monoclonal antibody to RF1
Species/Host	Mouse
Reactivity	Human
Conjugation	Unconjugated
Tested Applications	ELISA, FC, WB
Immunogen	Purified recombinant fragment of human RF1 (AA: 288-437) expressed in E. Coli.
Preservatives	Purified antibody in PBS with 0.05% sodium azide
Concentration	1mg/ml
Storage	Maintain refrigerated at 2-8°C for up to 2 weeks. For long term storage store at -20°C in small aliquots to prevent freeze-thaw cycles.
Note	For research use only
Isotype	Mouse IgG1
Clonality	Monoclonal
MW	49kDa
Entrez	2107
Dilution Range	WB: 1/500 - 1/2000; RCM: 1/200 - 1/400; ELISA: 1/10000
Expiration Date	12 months from date of receipt.

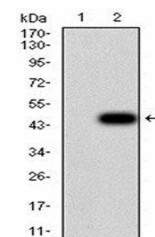


Flow cytometric analysis of HepG2 cells

...



Western blot analysis of human recombinant RF1



Western blot analysis of HEK293 using RF1 antibody