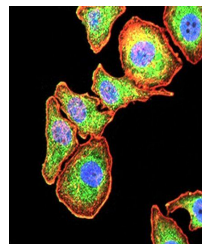


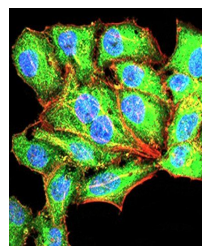
Product Datasheet

SERPINA1 Antibody (orb333879)

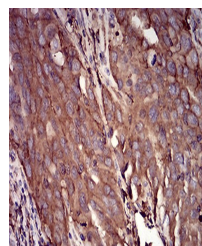
Description	Mouse monoclonal antibody to SERPINA1
Species/Host	Mouse
Reactivity	Human
Conjugation	Unconjugated
Tested Applications	ELISA, FC, ICC, IHC
Immunogen	Purified recombinant fragment of human SERPINA1 (AA: 23-237) expressed in E. Coli.
Preservatives	Purified antibody in PBS with 0.05% sodium azide
Concentration	1mg/ml
Storage	Maintain refrigerated at 2-8°C for up to 2 weeks. For long term storage store at -20°C in small aliquots to prevent freeze-thaw cycles.
Note	For research use only
Isotype	Mouse IgG1
Clonality	Monoclonal
MW	46.7kDa
Entrez	5265
Dilution Range	IHC: 1/200 - 1/1000; ICC: 1/200 - 1/1000; RCM: 1/200 - 1/400; ELISA: 1/10000
Expiration Date	12 months from date of receipt.



Immunofluorescence analysis of GC-7901 C...



Immunofluorescence analysis of HepG2 cel...



Immunohistochemical analysis of formalin...