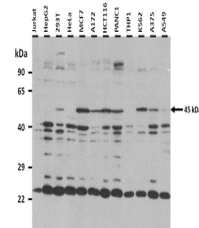


Product Datasheet

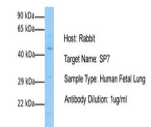
Sp7/Osterix antibody (orb333702)

Description	Rabbit polyclonal antibody to Sp7/Osterix
Species/Host	Rabbit
Reactivity	Human
Conjugation	Unconjugated
Tested Applications	IHC, WB
Immunogen	The immunogen is a synthetic peptide directed towards the N terminal region of human SP7
Target	SP7
Preservatives	Liquid. Purified antibody supplied in 1x PBS buffer with 0.09% (w/v) sodium azide and 2% sucrose.
Form/Appearance	Liquid. Purified antibody supplied in 1x PBS buffer with 0.09% (w/v) sodium azide and 2% sucrose.
Concentration	0.5 mg/ml
Storage	Maintain refrigerated at 2-8°C for up to 2 weeks. For long term storage store at -20°C in small aliquots to prevent freeze-thaw cycles.
Note	For research use only
Protein Sequence	Synthetic peptide located within the following region: MASSLLEEEVHYGSSPLAMLTAAACSKFGGSSPLRDSTTLGKAGTKKPYSV
Clonality	Polyclonal
MW	45 kDa
Uniprot ID	Q8TDD2
NCBI	NP_690599
Expiration Date	12 months from date of receipt.

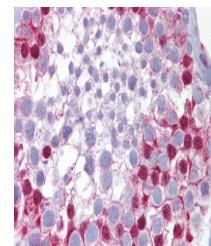


25 ug of the indicated Human whole cell ...

SP7



Host: Rabbit, Target Name: SP7, Sample T...



Immunohistochemistry with Testis tissue ...