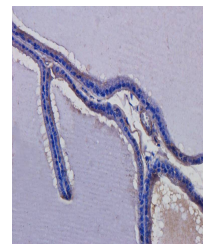


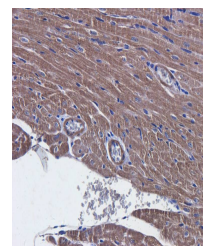
Product Datasheet

LC3 antibody (orb33328)

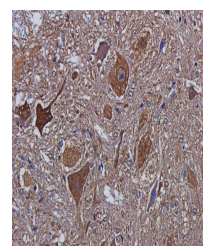
Description	LC3 antibody
Species/Host	Rabbit
Reactivity	Human, Mouse, Rat
Conjugation	Unconjugated
Tested Applications	ICC, IF, IHC-P, WB
Immunogen	KLH conjugated synthetic peptide derived from human LC3. Please contact us for the exact immunogen sequence. The peptide is available as orb12928.
Target	LC3
Form/Appearance	10 mM PBS, 0.02% sodium azide
Concentration	- 100 µg (in 200 µl): 0.5 mg/ml- 200 µg (in 400 µl): 0.5 mg/ml
Storage	Store at 4°C for up to two weeks. For long term storage, aliquot and store at -20°C, avoid freeze/thaw cycles.
Note	For research use only
Isotype	IgG
Clonality	Polyclonal
Purity	Polyclonal antibodies are purified by peptide affinity chromatography
MW	14 kDa
Uniprot ID	Q9GZQ8
Entrez	81631
Dilution Range	IF/ICC: 1:100-800, IHC-P: 1:100-800, WB: 1:200-2000
Expiration Date	12 months from date of receipt.



IHC-P image of rat prostate tissue using...



Immunohistochemical staining of mouse he...



Immunohistochemical staining of rat spin...