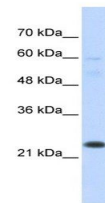


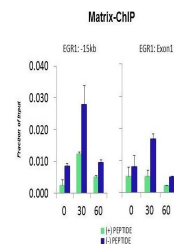
Product Datasheet

TAF12 antibody (orb333131)

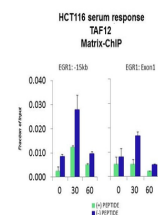
Description	Rabbit polyclonal antibody to TAF12
Species/Host	Rabbit
Reactivity	Canine, Equine, Guinea pig, Human, Mouse, Rat
Conjugation	Unconjugated
Tested Applications	ChIP, WB
Immunogen	The immunogen is a synthetic peptide directed towards the N terminal region of human TAF12
Target	TAF12
Preservatives	Liquid. Purified antibody supplied in 1x PBS buffer with 0.09% (w/v) sodium azide and 2% sucrose.
Form/Appearance	Liquid. Purified antibody supplied in 1x PBS buffer with 0.09% (w/v) sodium azide and 2% sucrose.
Concentration	0.5 mg/ml
Storage	Maintain refrigerated at 2-8°C for up to 2 weeks. For long term storage store at -20°C in small aliquots to prevent freeze-thaw cycles.
Note	For research use only
Protein Sequence	Synthetic peptide located within the following region: MNQFGPSALINLSNFSSIKPEPASTPPQGSMANSTAVVKIPGTPGAGGRL
Clonality	Polyclonal
MW	18kDa
Uniprot ID	Q16514
NCBI	NP_005635
Expiration Date	12 months from date of receipt.



Western blot analysis of Transfected 293...



ChIP analysis of human colon carcinoma u...



Quiescent human colon carcinoma HCT116 c...