

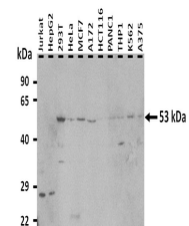
Product Datasheet

TFEB antibody (orb333116)

Description	Rabbit polyclonal antibody to TFEB
Species/Host	Rabbit
Reactivity	Canine, Equine, Goat, Guinea pig, Human, Mouse, Porcine, Rat
Conjugation	Unconjugated
Tested Applications	WB
Immunogen	The immunogen is a synthetic peptide directed towards the middle region of human TFEB
Target	TFEB
Preservatives	Liquid. Purified antibody supplied in 1x PBS buffer with 0.09% (w/v) sodium azide and 2% sucrose.
Form/Appearance	Liquid. Purified antibody supplied in 1x PBS buffer with 0.09% (w/v) sodium azide and 2% sucrose.
Concentration	0.5 mg/ml
Storage	Maintain refrigerated at 2-8°C for up to 2 weeks. For long term storage store at -20°C in small aliquots to prevent freeze-thaw cycles.
Note	For research use only
Protein Sequence	Synthetic peptide located within the following region: IKELGMLIPKANDLDVLRWNGTILKASVDYIRRMQKDLQKSRELENHSRR
Clonality	Polyclonal
MW	53 kDa
Uniprot ID	P19484
Expiration Date	12 months from date of receipt.

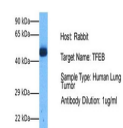


Western blot analysis of HepG2 cell lysa...



25 ug of the indicated Human whole cell ...

TFEB



Host: Rabbit,
Target Name:
TFEB, Sample ...