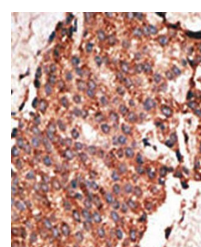
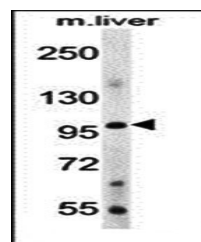


Product Datasheet

Bmp1 antibody (orb33307)

Description	Rabbit polyclonal antibody to BMP-1 is an extracellular zinc endopeptidase of the astacin family and...
Species/Host	Rabbit
Reactivity	Mouse
Conjugation	Unconjugated
Tested Applications	IHC-P, WB
Immunogen	Synthetic Peptide
Target	BMP1
Form/Appearance	Purified polyclonal antibody supplied in PBS with 0.09% (W/V) sodium azide. This antibody is prepared by Saturated Ammonium Sulfate (SAS) precipitation followed by dialysis against PBS.
Storage	Maintain refrigerated at 2-8°C for up to 2 weeks. For long term storage store at -20°C in small aliquots to prevent freeze-thaw cycles
Note	For research use only
Isotype	Rabbit IgG
Clonality	Polyclonal
MW	111249
Uniprot ID	P13497
NCBI	NP_006120.1 , NP_001190.1
Dilution Range	IHC-P: 1:50-100, WB: 1:1000
Expiration Date	12 months from date of receipt.



Immunohistochemical analysis of formali...