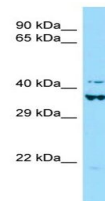


Product Datasheet

DEF6 antibody (orb331309)

Description	Rabbit polyclonal antibody to DEF6
Species/Host	Rabbit
Reactivity	Canine, Equine, Guinea pig, Human, Mouse, Porcine, Rat
Conjugation	Unconjugated
Tested Applications	WB
Immunogen	The immunogen is a synthetic peptide directed towards the C-terminal region of human BRCC3
Target	BRCC3
Preservatives	Liquid. Purified antibody supplied in 1x PBS buffer with 0.09% (w/v) sodium azide and 2% sucrose.
Form/Appearance	Liquid. Purified antibody supplied in 1x PBS buffer with 0.09% (w/v) sodium azide and 2% sucrose.
Concentration	0.5 mg/ml
Storage	Maintain refrigerated at 2-8°C for up to 2 weeks. For long term storage store at -20°C in small aliquots to prevent freeze-thaw cycles.
Note	For research use only
Protein Sequence	Synthetic peptide located within the following region: QERYIERAQQEKEELQQEMAQSRSLQQAQQQLEEVQRNRQRADEDVEAA
Clonality	Polyclonal
MW	41kDa
Uniprot ID	P46736
NCBI	NP_001018065.1
Expiration Date	12 months from date of receipt.



Western blot analysis of human 293T tiss...



Host: Rabbit,
Target Name:
DEF6, Sample ...