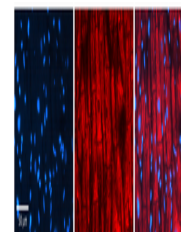


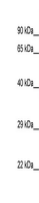
Product Datasheet

CLPP antibody (orb331220)

Description	Rabbit polyclonal antibody to CLPP
Species/Host	Rabbit
Reactivity	Human
Conjugation	Unconjugated
Tested Applications	WB
Target	CLPP
Preservatives	Liquid. Purified antibody supplied in 1x PBS buffer with 0.09% (w/v) sodium azide and 2% sucrose.
Form/Appearance	Liquid. Purified antibody supplied in 1x PBS buffer with 0.09% (w/v) sodium azide and 2% sucrose.
Concentration	0.5 mg/ml
Storage	Maintain refrigerated at 2-8°C for up to 2 weeks. For long term storage store at -20°C in small aliquots to prevent freeze-thaw cycles.
Note	For research use only
Protein Sequence	Synthetic peptide located within the following region: EEIMKLLKKQLYNIYAKHTKQSLQVIESAMERDRYMSPMEAQEFGLDKVL
Clonality	Polyclonal
MW	24kDa
Uniprot ID	Q16740
NCBI	NP_006003
Expiration Date	12 months from date of receipt.



Rabbit Anti-CLPP Antibody, Catalog Numbe...



WB Suggested Anti-CLPP Antibody, Titrat...