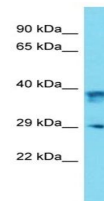


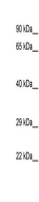
Product Datasheet

Prnp antibody (orb331215)

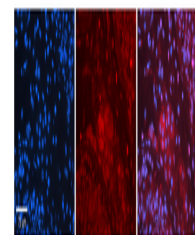
Description	Rabbit polyclonal antibody to Prnp
Species/Host	Rabbit
Reactivity	Canine, Goat, Human, Rat, Sheep
Conjugation	Unconjugated
Tested Applications	WB
Immunogen	The immunogen is a synthetic peptide directed towards the middle region of Mouse Prnp
Target	Prnp
Preservatives	Liquid. Purified antibody supplied in 1x PBS buffer with 0.09% (w/v) sodium azide and 2% sucrose.
Form/Appearance	Liquid. Purified antibody supplied in 1x PBS buffer with 0.09% (w/v) sodium azide and 2% sucrose.
Concentration	0.5 mg/ml
Storage	Maintain refrigerated at 2-8°C for up to 2 weeks. For long term storage store at -20°C in small aliquots to prevent freeze-thaw cycles.
Note	For research use only
Protein Sequence	Synthetic peptide located within the following region: GGGTHNQWNKPSKPKTNLKHVAGAAAAGAVVGGGLGGYMLGSAMSRPMIHF
Clonality	Polyclonal
MW	28kDa
Uniprot ID	P04925
NCBI	NP_035300
Expiration Date	12 months from date of receipt.



Western blot analysis of mouse Kidney ti...



Host: Rabbit,
Target Name:
Prnp, Sample ...



Rabbit Anti-PRNP Antibody, Catalog Numbe...