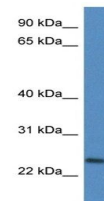


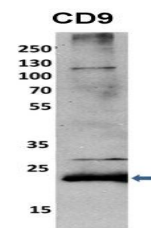
Product Datasheet

CD9 antibody (orb331123)

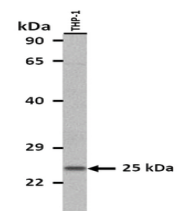
Description	Rabbit polyclonal antibody to CD9
Species/Host	Rabbit
Reactivity	Human, Mouse
Conjugation	Unconjugated
Tested Applications	WB
Immunogen	The immunogen is a synthetic peptide directed towards the N terminal region of human CD9
Target	CD9
Preservatives	Liquid. Purified antibody supplied in 1x PBS buffer with 0.09% (w/v) sodium azide and 2% sucrose.
Form/Appearance	Liquid. Purified antibody supplied in 1x PBS buffer with 0.09% (w/v) sodium azide and 2% sucrose.
Concentration	0.5 mg/ml
Storage	Maintain refrigerated at 2-8°C for up to 2 weeks. For long term storage store at -20°C in small aliquots to prevent freeze-thaw cycles.
Note	For research use only
Protein Sequence	Synthetic peptide located within the following region: KYLFLGFNFIFWLAGIAVLAIGLWLRFDSTKTSIFEQETNNNNSSFYTG
Clonality	Polyclonal
MW	25 kDa
Uniprot ID	P21926
NCBI	NP_001760
Expiration Date	12 months from date of receipt.



Western blot analysis of human Fetal head...



Western blot analysis of mouse fibroblasts...



25 ug of THP-1 whole cell extract was loaded...