

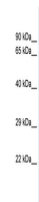
Product Datasheet

SLC52A1 antibody (orb331059)

Description	Rabbit polyclonal antibody to SLC52A1
Species/Host	Rabbit
Reactivity	Canine, Equine, Guinea pig, Human, Mouse, Porcine, Rat
Conjugation	Unconjugated
Tested Applications	WB
Immunogen	The immunogen is a synthetic peptide directed towards the C-terminal region of human SLC52A2
Target	SLC52A2
Preservatives	Liquid. Purified antibody supplied in 1x PBS buffer with 0.09% (w/v) sodium azide and 2% sucrose.
Form/Appearance	Liquid. Purified antibody supplied in 1x PBS buffer with 0.09% (w/v) sodium azide and 2% sucrose.
Concentration	0.5 mg/ml
Storage	Maintain refrigerated at 2-8°C for up to 2 weeks. For long term storage store at -20°C in small aliquots to prevent freeze-thaw cycles.
Note	For research use only
Protein Sequence	Synthetic peptide located within the following region: SLPSVTTGGSGPELQLGSPGAEEEEEEEEALPLQEPPSQAAGTIPGPD
Clonality	Polyclonal
MW	38kDa
Uniprot ID	Q9HAB3
NCBI	NP_001240744.1
Expiration Date	12 months from date of receipt.



Western blot analysis of human HepG2 tis...



Host: Rabbit,
Target Name:
SLC52A1,
Samp...