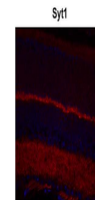


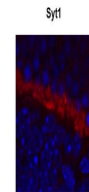
Product Datasheet

Syt1 antibody (orb331045)

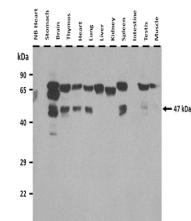
Description	Rabbit polyclonal antibody to Syt1
Species/Host	Rabbit
Reactivity	Mouse
Conjugation	Unconjugated
Tested Applications	IHC, WB
Immunogen	The immunogen is a synthetic peptide corresponding to a region of Mouse
Target	Syt1
Preservatives	Liquid. Purified antibody supplied in 1x PBS buffer with 0.09% (w/v) sodium azide and 2% sucrose.
Form/Appearance	Liquid. Purified antibody supplied in 1x PBS buffer with 0.09% (w/v) sodium azide and 2% sucrose.
Concentration	0.5 mg/ml
Storage	Maintain refrigerated at 2-8°C for up to 2 weeks. For long term storage store at -20°C in small aliquots to prevent freeze-thaw cycles.
Note	For research use only
Protein Sequence	Synthetic peptide located within the following region: FDRFSKHDIIIGFEFKVPMNTVDFGHVTEEWRDLQSAEKEEQEKLGDICFSL
Clonality	Polyclonal
MW	47kDa
Uniprot ID	P46096
NCBI	NP_033332
Expiration Date	12 months from date of receipt.



Sample Type:
complete
mouse retina
secti...



Sample Type:
outer mouse
plexiform
layer...



25 ug of the
indicated
Human whole
cell ...