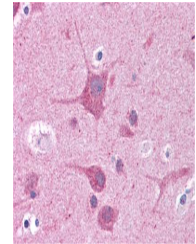


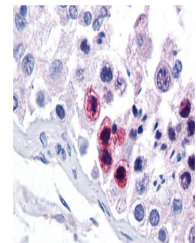
Product Datasheet

RORC antibody (orb331020)

Description	Rabbit polyclonal antibody to RORC
Species/Host	Rabbit
Reactivity	Human
Conjugation	Unconjugated
Tested Applications	IHC-P, WB
Immunogen	The immunogen is a synthetic peptide directed towards the N terminal region of human RORC
Target	RORC
Preservatives	Liquid. Purified antibody supplied in 1x PBS buffer with 0.09% (w/v) sodium azide and 2% sucrose.
Form/Appearance	Liquid. Purified antibody supplied in 1x PBS buffer with 0.09% (w/v) sodium azide and 2% sucrose.
Concentration	0.5 mg/ml
Storage	Maintain refrigerated at 2-8°C for up to 2 weeks. For long term storage store at -20°C in small aliquots to prevent freeze-thaw cycles.
Note	For research use only
Protein Sequence	Synthetic peptide located within the following region: KICGDKSSGIHYGVITCEGCKGFFRRSQRCNAAYSCTRQNCPIDRTSRN
Clonality	Polyclonal
MW	56kDa
Uniprot ID	P51449
NCBI	NP_001001523
Expiration Date	12 months from date of receipt.



Human Testis



Human Testis



WB Suggested
Anti-RORC
Antibody
Titratio...