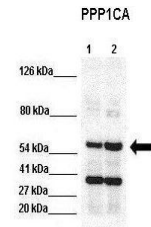


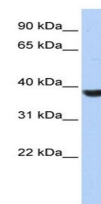
Product Datasheet

PPP1CA antibody (orb330990)

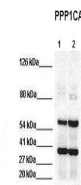
Description	Rabbit polyclonal antibody to PPP1CA
Species/Host	Rabbit
Reactivity	Canine, Guinea pig, Human, Mouse, Rat
Conjugation	Unconjugated
Tested Applications	WB
Immunogen	The immunogen is a synthetic peptide directed towards the N terminal region of human PPP1CA
Target	PPP1CA
Preservatives	Liquid. Purified antibody supplied in 1x PBS buffer with 0.09% (w/v) sodium azide and 2% sucrose.
Form/Appearance	Liquid. Purified antibody supplied in 1x PBS buffer with 0.09% (w/v) sodium azide and 2% sucrose.
Concentration	0.5 mg/ml
Storage	Maintain refrigerated at 2-8°C for up to 2 weeks. For long term storage store at -20°C in small aliquots to prevent freeze-thaw cycles.
Note	For research use only
Protein Sequence	Synthetic peptide located within the following region: MSDSEKLNLDISIIGRLLEGSRVLTTPHCAPVQGSRPGKNVQLTENEIRGLC
Clonality	Polyclonal
MW	38kDa
Uniprot ID	Q07161
NCBI	NP_001008709
Expiration Date	12 months from date of receipt.



Western blot analysis of HEK293 lysate t...



Western blot analysis of Jurkat cell lys...



WB Suggested Anti-PPP1CA Antibody, Posit...