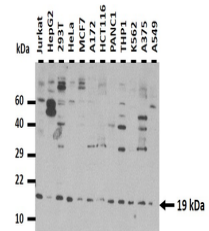


Product Datasheet

GPX4 antibody (orb330978)

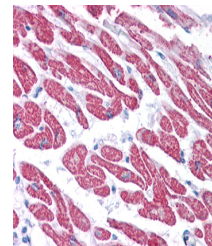
Description	Rabbit polyclonal antibody to GPX4
Species/Host	Rabbit
Reactivity	Human, Rat
Conjugation	Unconjugated
Tested Applications	IHC, WB
Immunogen	The immunogen is a synthetic peptide directed towards the middle region of human GPX4
Target	GPX4
Preservatives	Liquid. Purified antibody supplied in 1x PBS buffer with 0.09% (w/v) sodium azide and 2% sucrose.
Form/Appearance	Liquid. Purified antibody supplied in 1x PBS buffer with 0.09% (w/v) sodium azide and 2% sucrose.
Concentration	0.5 mg/ml
Storage	Maintain refrigerated at 2-8°C for up to 2 weeks. For long term storage store at -20°C in small aliquots to prevent freeze-thaw cycles.
Note	For research use only
Protein Sequence	Synthetic peptide located within the following region: QUGKTEVNYTQLVDLHARYAECGLRILAFPCNQFGKQEPGSNEEIKEFAA
Clonality	Polyclonal
MW	19 kDa
Uniprot ID	P36969
NCBI	NP_002076
Expiration Date	12 months from date of receipt.



25 ug of the indicated Human cell extrac...



GPX4 antibody - middle region (orb330978...)



Immunohistochemistry with formalin-fixed...