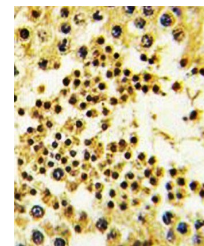
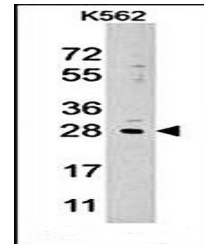


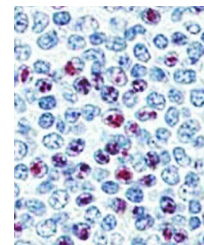
Product Datasheet

LIN28B antibody (orb33097)

Description	Rabbit polyclonal antibody to Mouse Olfr545 belongs to a large family of G-protein-coupled receptor...
Species/Host	Rabbit
Reactivity	Human, Mouse, Rat
Conjugation	Unconjugated
Tested Applications	FC, IF, IHC-P, WB
Immunogen	Synthetic Peptide
Target	LIN28B
Form/Appearance	Purified polyclonal antibody supplied in PBS with 0.09% (W/V) sodium azide. This antibody is purified through a protein A column, followed by peptide affinity purification.
Storage	Maintain refrigerated at 2-8°C for up to 2 weeks. For long term storage store at -20°C in small aliquots to prevent freeze-thaw cycles
Note	For research use only
Isotype	Rabbit IgG
Clonality	Polyclonal
MW	27084
Uniprot ID	Q6ZN17
NCBI	NP_001004317.1
Dilution Range	IHC-P: 1:10-50, WB: 1:1000, FACS: 1:10-50, IF/ICC: 1:10-50
Expiration Date	12 months from date of receipt.



Immunohistochemical analysis of formalin...



Immunohistochemical analysis of formalin...