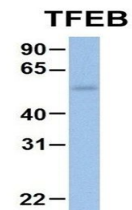


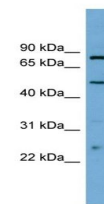
Product Datasheet

TFEB antibody (orb330957)

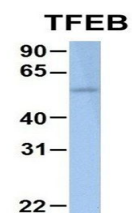
Description	Rabbit polyclonal antibody to TFEB
Species/Host	Rabbit
Reactivity	Canine, Equine, Goat, Human
Conjugation	Unconjugated
Tested Applications	WB
Immunogen	The immunogen is a synthetic peptide directed towards the middle region of human TFEB
Target	TFEB
Preservatives	Liquid. Purified antibody supplied in 1x PBS buffer with 0.09% (w/v) sodium azide and 2% sucrose.
Form/Appearance	Liquid. Purified antibody supplied in 1x PBS buffer with 0.09% (w/v) sodium azide and 2% sucrose.
Concentration	0.5 mg/ml
Storage	Maintain refrigerated at 2-8°C for up to 2 weeks. For long term storage store at -20°C in small aliquots to prevent freeze-thaw cycles.
Note	For research use only
Protein Sequence	Synthetic peptide located within the following region: DFSHLSFGGREDEGPPGYPEPLAPGHGSPFPSLSKKDLMLLDDSLLP
Clonality	Polyclonal
MW	53kDa
Uniprot ID	P19484
NCBI	NP_009093
Expiration Date	12 months from date of receipt.



Western blot analysis of human Fetal Hepatoma (Hea...)



Western blot analysis of PANC1 cell lysate...



Western blot analysis of human Placenta