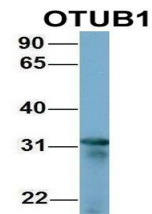


Product Datasheet

OTUB1 antibody (orb330908)

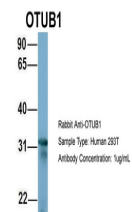
Description	Rabbit polyclonal antibody to OTUB1
Species/Host	Rabbit
Reactivity	Human
Conjugation	Unconjugated
Tested Applications	WB
Immunogen	The immunogen is a synthetic peptide directed towards the middle region of human OTUB1
Target	OTUB1
Preservatives	Liquid. Purified antibody supplied in 1x PBS buffer with 0.09% (w/v) sodium azide and 2% sucrose.
Form/Appearance	Liquid. Purified antibody supplied in 1x PBS buffer with 0.09% (w/v) sodium azide and 2% sucrose.
Concentration	0.5 mg/ml
Storage	Maintain refrigerated at 2-8°C for up to 2 weeks. For long term storage store at -20°C in small aliquots to prevent freeze-thaw cycles.
Note	For research use only
Protein Sequence	Synthetic peptide located within the following region: KIKDLHKKYSYIRKTRPDGNCFYRAFGFSHLEALLDDSKELQRFKAVSAK
Clonality	Polyclonal
MW	31kDa
Uniprot ID	Q96FW1
NCBI	NP_060140
Expiration Date	12 months from date of receipt.



Western blot analysis of human HEK293T t...



Western blot analysis of HepG2 cell lysa...



Host: Rabbit,
Target Name:
OTUB1,
Sample...