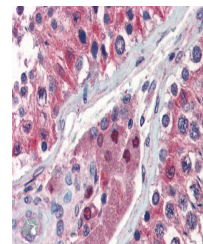


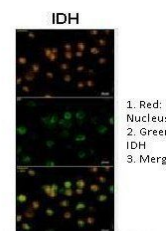
Product Datasheet

IDH1 antibody (orb330779)

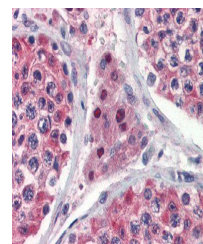
Description	Rabbit polyclonal antibody to IDH1
Species/Host	Rabbit
Reactivity	Canine, Equine, Guinea pig, Human, Mouse, Rat, Sheep, Yeast
Conjugation	Unconjugated
Tested Applications	IHC, WB
Immunogen	The immunogen is a synthetic peptide directed towards the C terminal region of human IDH1
Target	IDH1
Preservatives	Liquid. Purified antibody supplied in 1x PBS buffer with 0.09% (w/v) sodium azide and 2% sucrose.
Form/Appearance	Liquid. Purified antibody supplied in 1x PBS buffer with 0.09% (w/v) sodium azide and 2% sucrose.
Concentration	0.5 mg/ml
Storage	Maintain refrigerated at 2-8°C for up to 2 weeks. For long term storage store at -20°C in small aliquots to prevent freeze-thaw cycles.
Note	For research use only
Protein Sequence	Synthetic peptide located within the following region: MMTSLVLCPDGKTVEAAHGTVTRHYRMYQKGQETSTNPIASIFAWTRG
Clonality	Polyclonal
MW	47 kDa
Uniprot ID	O75874
NCBI	NP_005887
Expiration Date	12 months from date of receipt.



Immunohistochemical staining of human Te...



Immunohistochemical staining of human gl...



Immunohistochemical staining of human Te...