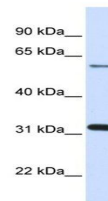


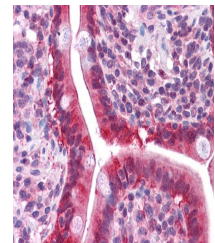
Product Datasheet

Galectin 3 antibody (orb330771)

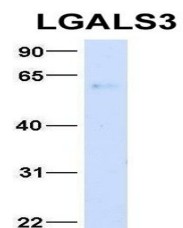
Description	Rabbit polyclonal antibody to Galectin 3
Species/Host	Rabbit
Reactivity	Human, Mouse
Conjugation	Unconjugated
Tested Applications	IHC, WB
Immunogen	The immunogen is a synthetic peptide directed towards the N terminal region of human LGALS3
Target	LGALS3
Preservatives	Liquid. Purified antibody supplied in 1x PBS buffer with 0.09% (w/v) sodium azide and 2% sucrose.
Form/Appearance	Liquid. Purified antibody supplied in 1x PBS buffer with 0.09% (w/v) sodium azide and 2% sucrose.
Concentration	0.5 mg/ml
Storage	Maintain refrigerated at 2-8°C for up to 2 weeks. For long term storage store at -20°C in small aliquots to prevent freeze-thaw cycles.
Note	For research use only
Protein Sequence	Synthetic peptide located within the following region: GASYPGAYPGQAPPGAYPGQAPPGAYPGAPGAYPGAPAPGVYPGPPSPGPG
Clonality	Polyclonal
MW	26kDa
Uniprot ID	P17931
NCBI	NP_002297
Expiration Date	12 months from date of receipt.



Western blot analysis of Fetal Lung cell...



Immunohistochemical staining of human Sm...



Western blot analysis of human Fetal Hea...