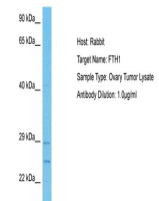


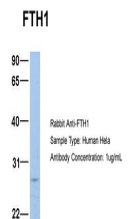
Product Datasheet

FTH1 antibody (orb330765)

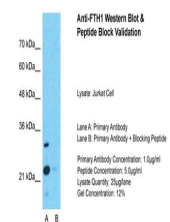
Description	Rabbit polyclonal antibody to FTH1
Species/Host	Rabbit
Reactivity	Human
Conjugation	Unconjugated
Tested Applications	IHC, WB
Immunogen	The immunogen is a synthetic peptide directed towards the middle region of human FTH1
Target	FTH1
Preservatives	Liquid. Purified antibody supplied in 1x PBS buffer with 0.09% (w/v) sodium azide and 2% sucrose.
Form/Appearance	Liquid. Purified antibody supplied in 1x PBS buffer with 0.09% (w/v) sodium azide and 2% sucrose.
Concentration	0.5 mg/ml
Storage	Maintain refrigerated at 2-8°C for up to 2 weeks. For long term storage store at -20°C in small aliquots to prevent freeze-thaw cycles.
Note	For research use only
Protein Sequence	Synthetic peptide located within the following region: NVNQSLLELHKLATDKNDPHLCDFIETHYLNEQVKAIKELGDHVTNLRKM
Clonality	Polyclonal
MW	21 kDa
Uniprot ID	P02794
NCBI	NP_002023
Expiration Date	12 months from date of receipt.



Host: Rabbit,
Target Name:
FTH1, Sample
...



Host: Rabbit,
Target Name:
FTH1, Sample
...



Host: Rabbit,
Target Name:
FTH1, Sample
...