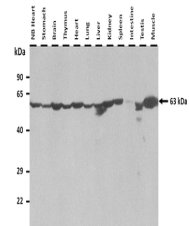


Product Datasheet

Usp21 antibody (orb330751)

Description	Rabbit polyclonal antibody to Usp21
Species/Host	Rabbit
Reactivity	Mouse
Conjugation	Unconjugated
Tested Applications	WB
Immunogen	The immunogen is a synthetic peptide directed towards the N-terminal region of Mouse Usp21
Target	Usp21
Preservatives	Liquid. Purified antibody supplied in 1x PBS buffer with 0.09% (w/v) sodium azide and 2% sucrose.
Form/Appearance	Liquid. Purified antibody supplied in 1x PBS buffer with 0.09% (w/v) sodium azide and 2% sucrose.
Concentration	0.5 mg/ml
Storage	Maintain refrigerated at 2-8°C for up to 2 weeks. For long term storage store at -20°C in small aliquots to prevent freeze-thaw cycles.
Note	For research use only
Protein Sequence	Synthetic peptide located within the following region: PLPPRPGPPDERLKKLELGRGRTSGSRPRGPLRADHGVPLPGSPPPAVAL
Clonality	Polyclonal
MW	63 kDa
Uniprot ID	Q9QZL6
NCBI	NP_038947
Expiration Date	12 months from date of receipt.



25 ug of the indicated Mouse whole cell ...



Host: Rabbit,
Target Name:
Usp21,
Sample...