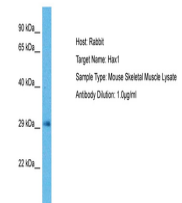


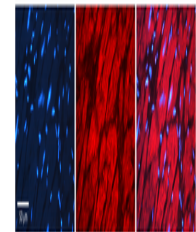
Product Datasheet

HAX1 antibody (orb330665)

Description	Rabbit polyclonal antibody to HAX1
Species/Host	Rabbit
Reactivity	Human, Mouse
Conjugation	Unconjugated
Tested Applications	WB
Immunogen	The immunogen is a synthetic peptide directed towards the middle region of human HAX1
Target	HAX1
Preservatives	Liquid. Purified antibody supplied in 1x PBS buffer with 0.09% (w/v) sodium azide and 2% sucrose.
Form/Appearance	Liquid. Purified antibody supplied in 1x PBS buffer with 0.09% (w/v) sodium azide and 2% sucrose.
Concentration	0.5 mg/ml
Storage	Maintain refrigerated at 2-8°C for up to 2 weeks. For long term storage store at -20°C in small aliquots to prevent freeze-thaw cycles.
Note	For research use only
Protein Sequence	Synthetic peptide located within the following region: LPGPESETPGERLRREGQTLRDSMLKYPDASHQPRIFGGVLESDARSESPQP
Clonality	Polyclonal
MW	31kDa
Uniprot ID	O00165
NCBI	NP_006109
Expiration Date	12 months from date of receipt.



Host: Mouse,
Target Name:
HAX1, Sample
T...



Rabbit Anti-
HAX1 Antibody,
Catalog
Numbe...



WB Suggested
Anti-HAX1
Antibody
Titratio...