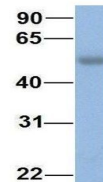


Product Datasheet

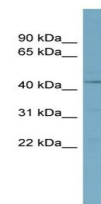
CSNK1D antibody (orb330652)

Description	Rabbit polyclonal antibody to CSNK1D
Species/Host	Rabbit
Reactivity	Canine, Equine, Guinea pig, Human, Mouse, Rat, Sheep, Zebrafish
Conjugation	Unconjugated
Tested Applications	WB
Immunogen	The immunogen is a synthetic peptide directed towards the middle region of human CSNK1D
Target	CSNK1D
Preservatives	Liquid. Purified antibody supplied in 1x PBS buffer with 0.09% (w/v) sodium azide and 2% sucrose.
Form/Appearance	Liquid. Purified antibody supplied in 1x PBS buffer with 0.09% (w/v) sodium azide and 2% sucrose.
Concentration	0.5 mg/ml
Storage	Maintain refrigerated at 2-8°C for up to 2 weeks. For long term storage store at -20°C in small aliquots to prevent freeze-thaw cycles.
Note	For research use only
Protein Sequence	Synthetic peptide located within the following region: NLVYIIDFGLAKKYRDARTHQHIPPYRENKNLTGTARYASINHLGIEQSR
Clonality	Polyclonal
MW	47kDa
Uniprot ID	P48730
NCBI	NP_001884
Expiration Date	12 months from date of receipt.

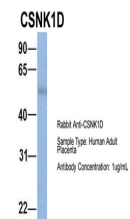
CSNK1D



Western blot analysis of human Fetal Lun...



Western blot analysis of OVCAR-3 cell ly...



Host: Rabbit,
Target Name:
CHAD, Sample

...