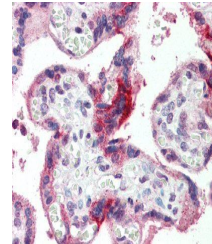


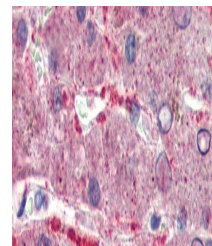
Product Datasheet

GPSM2 antibody (orb330634)

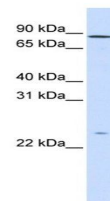
Description	Rabbit polyclonal antibody to GPSM2
Species/Host	Rabbit
Reactivity	Canine, Equine, Guinea pig, Human, Mouse, Porcine, Rat, Zebrafish
Conjugation	Unconjugated
Tested Applications	ICC, IF, IHC-P, WB
Immunogen	The immunogen is a synthetic peptide directed towards the N terminal region of human GPSM2
Target	GPSM2
Preservatives	Liquid. Purified antibody supplied in 1x PBS buffer with 0.09% (w/v) sodium azide and 2% sucrose.
Form/Appearance	Liquid. Purified antibody supplied in 1x PBS buffer with 0.09% (w/v) sodium azide and 2% sucrose.
Concentration	0.5 mg/ml
Storage	Maintain refrigerated at 2-8°C for up to 2 weeks. For long term storage store at -20°C in small aliquots to prevent freeze-thaw cycles.
Note	For research use only
Protein Sequence	Synthetic peptide located within the following region: YFYLHDYAKALEYHHHDLTLARTIGDQLGEAKASGNLGNLTKVLGNFDEA
Clonality	Polyclonal
MW	76kDa
Uniprot ID	P81274
NCBI	NP_037428
Expiration Date	12 months from date of receipt.



Immunohistochemical staining of human pl...



Immunohistochemical staining of human Li...



Western blot analysis of human Fetal Liv...