

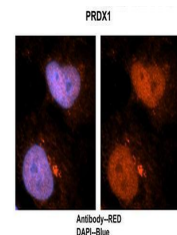
Product Datasheet

PRDX1 antibody (orb330556)

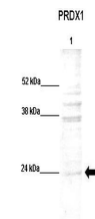
Description	Rabbit polyclonal antibody to PRDX1
Species/Host	Rabbit
Reactivity	Human, Mouse
Conjugation	Unconjugated
Tested Applications	IHC, WB
Immunogen	The immunogen is a synthetic peptide directed towards the N terminal region of human PRDX1
Target	PRDX1
Preservatives	Liquid. Purified antibody supplied in 1x PBS buffer with 0.09% (w/v) sodium azide and 2% sucrose.
Form/Appearance	Liquid. Purified antibody supplied in 1x PBS buffer with 0.09% (w/v) sodium azide and 2% sucrose.
Concentration	0.5 mg/ml
Storage	Maintain refrigerated at 2-8°C for up to 2 weeks. For long term storage store at -20°C in small aliquots to prevent freeze-thaw cycles.
Note	For research use only
Protein Sequence	Synthetic peptide located within the following region: SSGNAKIGH PAPNFKATAVMPDGQFKDISLSYKGYVVFYPLDFTFV
Clonality	Polyclonal
MW	22kDa
Uniprot ID	Q06830
NCBI	NP_002565
Expiration Date	12 months from date of receipt.



PRDX1 antibody - N-terminal region (orb3...



Application: IHC, Species+tissue/cell ty...



WB Suggested Anti-PRDX1 Antibody, Positi...