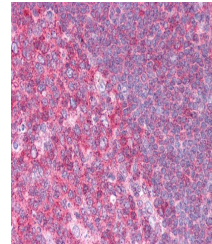


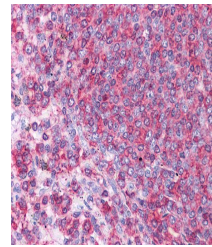
Product Datasheet

HSPA8 antibody (orb330555)

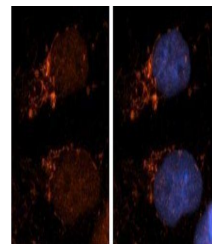
Description	Rabbit polyclonal antibody to HSPA8
Species/Host	Rabbit
Reactivity	Equine, Goat, Human, Mouse, Rat, Yeast, Zebrafish
Conjugation	Unconjugated
Tested Applications	IHC, WB
Immunogen	The immunogen is a synthetic peptide directed towards the N terminal region of human HSPA8
Target	HSPA8
Preservatives	Liquid. Purified antibody supplied in 1x PBS buffer with 0.09% (w/v) sodium azide and 2% sucrose.
Form/Appearance	Liquid. Purified antibody supplied in 1x PBS buffer with 0.09% (w/v) sodium azide and 2% sucrose.
Concentration	0.5 mg/ml
Storage	Maintain refrigerated at 2-8°C for up to 2 weeks. For long term storage store at -20°C in small aliquots to prevent freeze-thaw cycles.
Note	For research use only
Protein Sequence	Synthetic peptide located within the following region: VVTVPAYFNDSQRQATKDAGTIAGLNVLRIINEPTAAAIAYGLDKKVGAE
Clonality	Polyclonal
MW	71kDa
Uniprot ID	P11142
NCBI	NP_006588
Expiration Date	12 months from date of receipt.



Immunohistochemical staining of human To...



Immunohistochemical staining of human Sp...



Immunohistochemical staining of human Br...