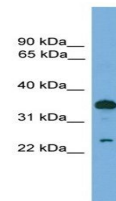


Product Datasheet

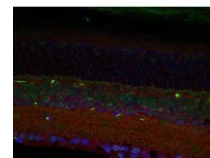
TPD52 antibody (orb330544)

Description	Rabbit polyclonal antibody to TPD52
Species/Host	Rabbit
Reactivity	Canine, Equine, Guinea pig, Human, Mouse, Porcine, Rat, Zebrafish
Conjugation	Unconjugated
Tested Applications	IHC, WB
Immunogen	The immunogen is a synthetic peptide directed towards the C terminal region of human TPD52
Target	TPD52
Preservatives	Liquid. Purified antibody supplied in 1x PBS buffer with 0.09% (w/v) sodium azide and 2% sucrose.
Form/Appearance	Liquid. Purified antibody supplied in 1x PBS buffer with 0.09% (w/v) sodium azide and 2% sucrose.
Concentration	0.5 mg/ml
Storage	Maintain refrigerated at 2-8°C for up to 2 weeks. For long term storage store at -20°C in small aliquots to prevent freeze-thaw cycles.
Note	For research use only
Protein Sequence	Synthetic peptide located within the following region: RELAKVEEEIQTLSQVLAAKEKHLAEIKRKLGINSLQELKQNIKGWQDV
Clonality	Polyclonal
MW	24kDa
Uniprot ID	Q62393
NCBI	NP_001020423
Expiration Date	12 months from date of receipt.



Western blot analysis of THP-1 cell lysa...

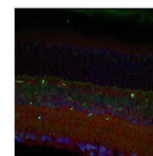
TPD52



Red: TPD52 antibody
Green: CtBP antibody
Blue: DAPI

Immunohistochemical staining of mouse re...

TPD52



Red: TPD52 antibody
Green: CtBP antibody
Blue: DAPI

Application: Immunofluorescence, Species...