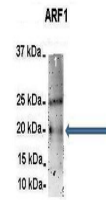


Product Datasheet

ARF1 antibody (orb330535)

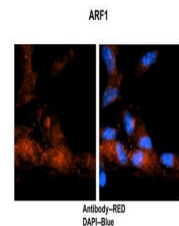
Description	Rabbit polyclonal antibody to ARF1
Species/Host	Rabbit
Reactivity	Human, Mouse, Rat
Conjugation	Unconjugated
Tested Applications	IHC, IP, WB
Immunogen	The immunogen is a synthetic peptide directed towards the middle region of human ARF1
Target	ARF1
Preservatives	Liquid. Purified antibody supplied in 1x PBS buffer with 0.09% (w/v) sodium azide and 2% sucrose.
Form/Appearance	Liquid. Purified antibody supplied in 1x PBS buffer with 0.09% (w/v) sodium azide and 2% sucrose.
Concentration	0.5 mg/ml
Storage	Maintain refrigerated at 2-8°C for up to 2 weeks. For long term storage store at -20°C in small aliquots to prevent freeze-thaw cycles.
Note	For research use only
Protein Sequence	Synthetic peptide located within the following region: MRMLAEDELRLDAVLLVFANKQDLPNAMNAAEITDKLGLHSLRHRNWIQA
Clonality	Polyclonal
MW	21kDa
Uniprot ID	P61204
NCBI	NP_001649
Expiration Date	12 months from date of receipt.



Amount and Sample Type: 500 ug rat brain...



ARF1 antibody - middle region (orb330535...)



Application: IHC, Species+tissue/cell ty...