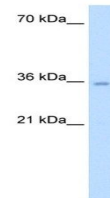


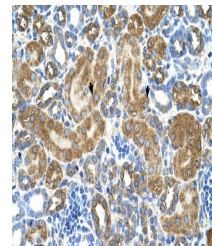
Product Datasheet

ATIC antibody (orb330466)

Description	Rabbit polyclonal antibody to ATIC
Species/Host	Rabbit
Reactivity	Human
Conjugation	Unconjugated
Tested Applications	IHC, WB
Immunogen	The immunogen is a synthetic peptide directed towards the middle region of human ATIC
Target	ATIC
Preservatives	Liquid. Purified antibody supplied in 1x PBS buffer with 0.09% (w/v) sodium azide and 2% sucrose.
Form/Appearance	Liquid. Purified antibody supplied in 1x PBS buffer with 0.09% (w/v) sodium azide and 2% sucrose.
Concentration	1.0 mg/ml
Storage	Maintain refrigerated at 2-8°C for up to 2 weeks. For long term storage store at -20°C in small aliquots to prevent freeze-thaw cycles.
Note	For research use only
Protein Sequence	Synthetic peptide located within the following region: RTLFLGLHLSQKRNNGVVDKSLFSNVVTKNKDLPESALRDLIVATIAVKYT
Clonality	Polyclonal
MW	30kDa
Uniprot ID	P31939
NCBI	EAW70527
Expiration Date	12 months from date of receipt.



Western blot analysis of human Jurkat ti...



Immunohistochemical staining of human ki...



ATIC antibody - middle region (orb330466...)