

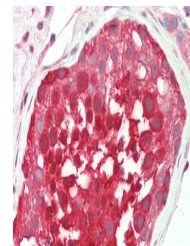
Product Datasheet

RANBP1 antibody (orb330464)

Description	Rabbit polyclonal antibody to RANBP1
Species/Host	Rabbit
Reactivity	Equine, Human, Yeast
Conjugation	Unconjugated
Tested Applications	WB
Immunogen	The immunogen is a synthetic peptide directed towards the C terminal region of human RANBP1
Target	RANBP1
Preservatives	Liquid. Purified antibody supplied in 1x PBS buffer with 0.09% (w/v) sodium azide and 2% sucrose.
Form/Appearance	Liquid. Purified antibody supplied in 1x PBS buffer with 0.09% (w/v) sodium azide and 2% sucrose.
Concentration	0.5 mg/ml
Storage	Maintain refrigerated at 2-8°C for up to 2 weeks. For long term storage store at -20°C in small aliquots to prevent freeze-thaw cycles.
Note	For research use only
Protein Sequence	Synthetic peptide located within the following region: KFEECRKEIEEREKKAGSGKNDHAEKVAEKLEALSVKEETKEDAEKQ
Clonality	Polyclonal
MW	23kDa
Uniprot ID	P43487
NCBI	NP_002873
Expiration Date	12 months from date of receipt.



Western blot analysis of 721_B cell lysa...



Rabbit Anti-RANBP1 antibody, Formalin Fi...



WB Suggested Anti-RANBP1 Antibody Titrat...