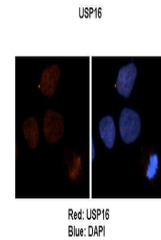


Product Datasheet

USP16 antibody (orb330447)

Description	Rabbit polyclonal antibody to USP16
Species/Host	Rabbit
Reactivity	Human
Conjugation	Unconjugated
Tested Applications	IHC, WB
Immunogen	The immunogen is a synthetic peptide directed towards the N terminal region of human USP16
Target	USP16
Preservatives	Liquid. Purified antibody supplied in 1x PBS buffer with 0.09% (w/v) sodium azide and 2% sucrose.
Form/Appearance	Liquid. Purified antibody supplied in 1x PBS buffer with 0.09% (w/v) sodium azide and 2% sucrose.
Concentration	1.0 mg/ml
Storage	Maintain refrigerated at 2-8°C for up to 2 weeks. For long term storage store at -20°C in small aliquots to prevent freeze-thaw cycles.
Note	For research use only
Protein Sequence	Synthetic peptide located within the following region: CKTDNKVKDKAAEETEELKPSVWLCLKCGHQGGRNSQEQHALKHYLTPRS
Clonality	Polyclonal
MW	44kDa
Uniprot ID	Q5VKN8
NCBI	AAR13293
Expiration Date	12 months from date of receipt.



Sample Type:
Human brain
stem cells
(NT2...)



WB Suggested
Anti-USP16
Antibody
Titrati...