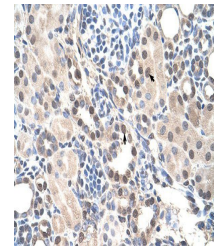


Product Datasheet

RORA antibody (orb330425)

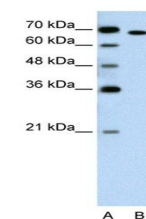
Description	Rabbit polyclonal antibody to RORA
Species/Host	Rabbit
Reactivity	Goat, Guinea pig, Human, Mouse, Rabbit, Rat, Sheep, Zebrafish
Conjugation	Unconjugated
Tested Applications	IHC, WB
Immunogen	The immunogen is a synthetic peptide directed towards the middle region of human RORA
Target	RORA
Preservatives	Liquid. Purified antibody supplied in 1x PBS buffer with 0.09% (w/v) sodium azide and 2% sucrose.
Form/Appearance	Liquid. Purified antibody supplied in 1x PBS buffer with 0.09% (w/v) sodium azide and 2% sucrose.
Concentration	1.0 mg/ml
Storage	Maintain refrigerated at 2-8°C for up to 2 weeks. For long term storage store at -20°C in small aliquots to prevent freeze-thaw cycles.
Note	For research use only
Protein Sequence	Synthetic peptide located within the following region: GHTPEGSKADSAVSSFYLDIQSPDQSGLDINGIKPEPICDYTPASGFFP
Clonality	Polyclonal
MW	63kDa
Uniprot ID	P35398
NCBI	NP_599022
Expiration Date	12 months from date of receipt.



Immunohistochemical staining of human kidney tissue.



Western blot analysis of Jurkat tissue lysate.



Western blot analysis of Jurkat cell lysate.