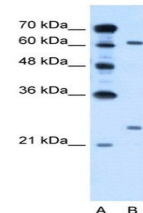


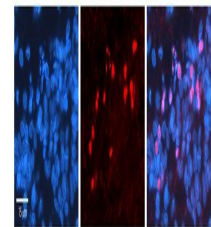
Product Datasheet

RORA antibody (orb330424)

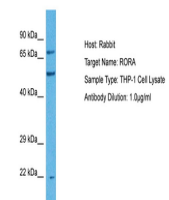
Description	Rabbit polyclonal antibody to RORA
Species/Host	Rabbit
Reactivity	Canine, Equine, Goat, Guinea pig, Human, Mouse, Porcine, Rat
Conjugation	Unconjugated
Tested Applications	IHC, WB
Immunogen	The immunogen is a synthetic peptide directed towards the middle region of human RORA
Target	RORA
Preservatives	Liquid. Purified antibody supplied in 1x PBS buffer with 0.09% (w/v) sodium azide and 2% sucrose.
Form/Appearance	Liquid. Purified antibody supplied in 1x PBS buffer with 0.09% (w/v) sodium azide and 2% sucrose.
Concentration	0.5 mg/ml
Storage	Maintain refrigerated at 2-8°C for up to 2 weeks. For long term storage store at -20°C in small aliquots to prevent freeze-thaw cycles.
Note	For research use only
Protein Sequence	Synthetic peptide located within the following region: PGAEPLTPTYNISANGLTELHDDLSDNYIDGHTPEGSKADSAVSSFYLDI
Clonality	Polyclonal
MW	62kDa
Uniprot ID	P35398
NCBI	NP_002934
Expiration Date	12 months from date of receipt.



Western blot analysis of HepG2 cell lysa...



Immunohistochemical staining of human Pi...



Host: Rabbit, Target Name: RORA, Sample

...