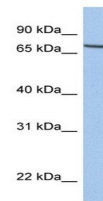


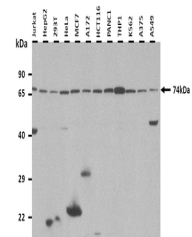
Product Datasheet

SLC20A1 antibody (orb330351)

Description	Rabbit polyclonal antibody to SLC20A1
Species/Host	Rabbit
Reactivity	Canine, Equine, Human, Porcine, Rat
Conjugation	Unconjugated
Tested Applications	WB
Immunogen	The immunogen is a synthetic peptide directed towards the C terminal region of human SLC20A1
Target	SLC20A1
Preservatives	Liquid. Purified antibody supplied in 1x PBS buffer with 0.09% (w/v) sodium azide and 2% sucrose.
Form/Appearance	Liquid. Purified antibody supplied in 1x PBS buffer with 0.09% (w/v) sodium azide and 2% sucrose.
Concentration	0.5 mg/ml
Storage	Maintain refrigerated at 2-8°C for up to 2 weeks. For long term storage store at -20°C in small aliquots to prevent freeze-thaw cycles.
Note	For research use only
Protein Sequence	Synthetic peptide located within the following region: LVALYLVYDTGDVSSKVATPIWLLLYGGVGICVGLWVWGRRVIQTMGKDL
Clonality	Polyclonal
MW	74 kDa
Uniprot ID	Q8WUM9
NCBI	NP_005406
Expiration Date	12 months from date of receipt.



Western blot analysis of MCF7 cell lysat...



25 ug of the indicated Human whole cell ...



WB Suggested Anti-SLC20A1 Antibody Titra...