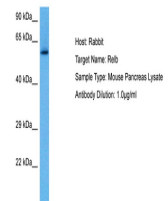


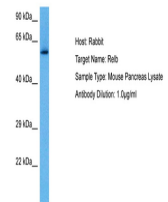
Product Datasheet

RELB antibody (orb330318)

Description	Rabbit polyclonal antibody to RELB
Species/Host	Rabbit
Reactivity	Mouse
Conjugation	Unconjugated
Tested Applications	WB
Immunogen	The immunogen is a synthetic peptide directed towards the C terminal region of human RELB
Target	RELB
Preservatives	Liquid. Purified antibody supplied in 1x PBS buffer with 0.09% (w/v) sodium azide and 2% sucrose.
Form/Appearance	Liquid. Purified antibody supplied in 1x PBS buffer with 0.09% (w/v) sodium azide and 2% sucrose.
Concentration	1.0 mg/ml
Storage	Maintain refrigerated at 2-8°C for up to 2 weeks. For long term storage store at -20°C in small aliquots to prevent freeze-thaw cycles.
Note	For research use only
Protein Sequence	Synthetic peptide located within the following region: GPEPLTLD SYQAPGPGDGGTASLVGSNMFNHYREAAFGGGLLSPGPEAT
Clonality	Polyclonal
MW	62kDa
Uniprot ID	Q01201
NCBI	NP_006500
Expiration Date	12 months from date of receipt.



Host: Mouse,
Target Name:
RELB, Sample
T...



Host: Rabbit,
Target Name:
RELB, Sample ...



WB Suggested
Anti-RELB
Antibody
Titration...