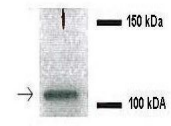


Product Datasheet

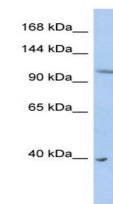
NEDD4L antibody (orb330290)

Description	Rabbit polyclonal antibody to NEDD4L
Species/Host	Rabbit
Reactivity	Canine, Equine, Guinea pig, Human, Mouse, Rat, Zebrafish
Conjugation	Unconjugated
Tested Applications	WB
Immunogen	The immunogen is a synthetic peptide directed towards the middle region of human NEDD4L
Target	NEDD4L
Preservatives	Liquid. Purified antibody supplied in 1x PBS buffer with 0.09% (w/v) sodium azide and 2% sucrose.
Form/Appearance	Liquid. Purified antibody supplied in 1x PBS buffer with 0.09% (w/v) sodium azide and 2% sucrose.
Concentration	0.5 mg/ml
Storage	Maintain refrigerated at 2-8°C for up to 2 weeks. For long term storage store at -20°C in small aliquots to prevent freeze-thaw cycles.
Note	For research use only
Protein Sequence	Synthetic peptide located within the following region: TVTLSAPLEGAKDSPVRRRAVKDTLSNPQSPQSPYNSPKPQHKVTQSFLP
Clonality	Polyclonal
MW	110 kDa
Uniprot ID	Q96PU5
NCBI	NP_056092
Expiration Date	12 months from date of receipt.

NEDD4L



Western blot analysis of human cystic fi...



Western blot analysis of PANC1 cell lya...

