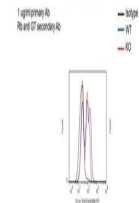


Product Datasheet

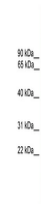
Rgs10 antibody (orb330265)

Description	Rabbit polyclonal antibody to Rgs10
Species/Host	Rabbit
Reactivity	Mouse
Conjugation	Unconjugated
Tested Applications	FACS, WB
Immunogen	The immunogen is a synthetic peptide corresponding to a region of Mouse
Target	Rgs10
Preservatives	Liquid. Purified antibody supplied in 1x PBS buffer with 0.09% (w/v) sodium azide and 2% sucrose.
Form/Appearance	Liquid. Purified antibody supplied in 1x PBS buffer with 0.09% (w/v) sodium azide and 2% sucrose.
Concentration	0.5 mg/ml
Storage	Maintain refrigerated at 2-8°C for up to 2 weeks. For long term storage store at -20°C in small aliquots to prevent freeze-thaw cycles.
Note	For research use only
Protein Sequence	Synthetic peptide located within the following region: MFTRAVSRLSRKRPPSDIHDGDGSSSSGHQSLKSTAKWASSLENLLEDPE
Clonality	Polyclonal
MW	21kDa
Uniprot ID	Q9CQE5
NCBI	NP_080694
Expiration Date	12 months from date of receipt.



FACS - Sample type: Bone marrow derived

...



WB Suggested Anti-Rgs10 Antibody Titrati...