

Product Datasheet

DISC1 antibody (orb33018)

Description Peptide affinity purified rabbit polyclonal antibody.

Species/Host Rabbit

Reactivity Human

Conjugation Unconjugated

Tested Applications FC, IHC-P, WB

Immunogen Synthetic Peptide

Target DISC1

Form/Appearance Purified polyclonal antibody supplied in PBS with 0.09% (W/V) sodium azide. This antibody is purified through a protein A column, followed by peptide affinity purification.

Storage Maintain refrigerated at 2-8°C for up to 2 weeks. For long term storage store at -20°C in small aliquots to prevent freeze-thaw cycles

Note For research use only

Isotype Rabbit IgG

Clonality Polyclonal

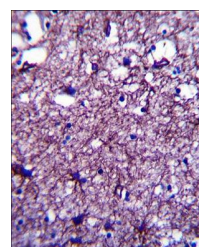
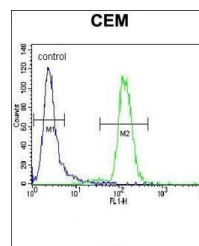
MW 93611

Uniprot ID [Q9NRI5](#)

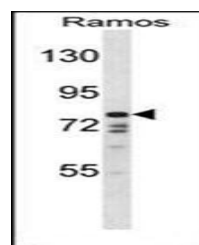
NCBI [NP_001158019.1](#), [NP_001012975.1](#), [NP_001158011.1](#), [NP_001012976.1](#), [NP_001158018.1](#), [NP_001158027.1](#), [NP_001158017.1](#), [NP_001012977.1](#), [NP_001158013.1](#), [NP_001158028.1](#), [NP_061132.2](#), [NP_001158016.1](#)

Dilution Range WB: 1:1000, FACS: 1:10-50, IHC-P: 1:10-50

Expiration Date 12 months from date of receipt.



Immunohistochemical staining of paraffin...



Western blot analysis of Ramos cell line...