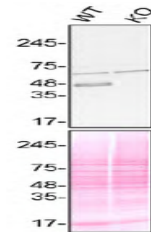


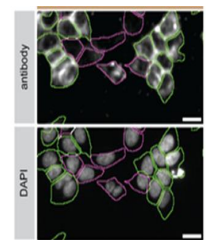
Product Datasheet

TIA1 antibody (orb330155)

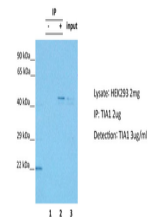
Description	Rabbit polyclonal antibody to TIA1
Species/Host	Rabbit
Reactivity	Human
Conjugation	Unconjugated
Tested Applications	WB
Immunogen	The immunogen is a synthetic peptide directed towards the C terminal region of human TIA1
Target	TIA1
Preservatives	Liquid. Purified antibody supplied in 1x PBS buffer with 0.09% (w/v) sodium azide and 2% sucrose.
Form/Appearance	Liquid. Purified antibody supplied in 1x PBS buffer with 0.09% (w/v) sodium azide and 2% sucrose.
Concentration	0.5 mg/ml
Storage	Maintain refrigerated at 2-8°C for up to 2 weeks. For long term storage store at -20°C in small aliquots to prevent freeze-thaw cycles.
Note	For research use only
Protein Sequence	Synthetic peptide located within the following region: QAWNQQGFNQTQSSAPWMGPNYGVQPPQGQNGSMLPNQPSGYRVAGYETQ
Clonality	Polyclonal
MW	42 kDa
Uniprot ID	P31483
NCBI	NP_071320
Expiration Date	12 months from date of receipt.



50 ug HAP1 WT and TIA1 KO lysates were s...



HAP1 WT and TIA1 KO cells were labelled ...



TIA1 was immunoprecipitated from 2 mg HE...