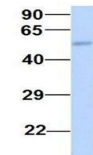


Product Datasheet

IGF2BP2 antibody (orb330141)

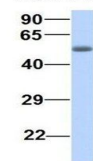
Description	Rabbit polyclonal antibody to IGF2BP2
Species/Host	Rabbit
Reactivity	Canine, Equine, Guinea pig, Human, Mouse, Rat, Yeast
Conjugation	Unconjugated
Tested Applications	WB
Immunogen	The immunogen is a synthetic peptide directed towards the middle region of human IGF2BP2
Target	IGF2BP2
Preservatives	Liquid. Purified antibody supplied in 1x PBS buffer with 0.09% (w/v) sodium azide and 2% sucrose.
Form/Appearance	Liquid. Purified antibody supplied in 1x PBS buffer with 0.09% (w/v) sodium azide and 2% sucrose.
Concentration	0.5 mg/ml
Storage	Maintain refrigerated at 2-8°C for up to 2 weeks. For long term storage store at -20°C in small aliquots to prevent freeze-thaw cycles.
Note	For research use only
Protein Sequence	Synthetic peptide located within the following region: QANLIPGLNLSALGIFSTGLSVLSPAGPRGAPPAAPYHPFTTHSGYFSS
Clonality	Polyclonal
MW	66kDa
Uniprot ID	Q9Y6M1
NCBI	NP_006539
Expiration Date	12 months from date of receipt.

IGF2BP2



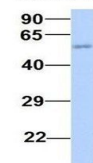
Western blot analysis of human Fetal Liv...

IGF2BP2



Western blot analysis of human Fetal Lun...

IGF2BP2



Western blot analysis of human Placenta ...