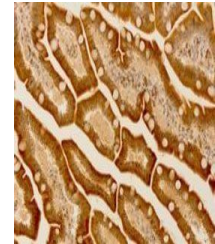


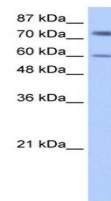
Product Datasheet

IGF2BP1 antibody (orb330140)

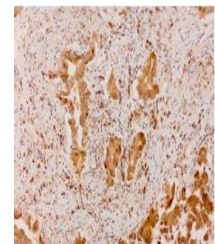
Description	Rabbit polyclonal antibody to IGF2BP1
Species/Host	Rabbit
Reactivity	Canine, Equine, Guinea pig, Human, Mouse, Porcine, Rat, Sheep
Conjugation	Unconjugated
Tested Applications	IHC, WB
Immunogen	The immunogen is a synthetic peptide directed towards the N terminal region of human IGF2BP1
Target	IGF2BP1
Preservatives	Liquid. Purified antibody supplied in 1x PBS buffer with 0.09% (w/v) sodium azide and 2% sucrose.
Form/Appearance	Liquid. Purified antibody supplied in 1x PBS buffer with 0.09% (w/v) sodium azide and 2% sucrose.
Concentration	0.5 mg/ml
Storage	Maintain refrigerated at 2-8°C for up to 2 weeks. For long term storage store at -20°C in small aliquots to prevent freeze-thaw cycles.
Note	For research use only
Protein Sequence	Synthetic peptide located within the following region: PDEQIAQGPENRRGGFGSRGQPRQSPVAAGAPAKQQQVDIPLRLLVPT
Clonality	Polyclonal
MW	63kDa
Uniprot ID	Q9NZI8
NCBI	NP_006537
Expiration Date	12 months from date of receipt.



Immunohistochemical staining of human Lu...



Western blot analysis of HepG2 cell lysa...



Immunohistochemical staining of human lu...