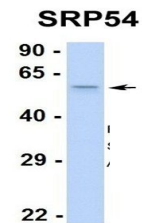


Product Datasheet

SRP54 antibody (orb330132)

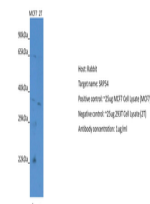
Description	Rabbit polyclonal antibody to SRP54
Species/Host	Rabbit
Reactivity	Canine, Equine, Goat, Guinea pig, Human, Mouse, Rat, Zebrafish
Conjugation	Unconjugated
Tested Applications	WB
Immunogen	The immunogen is a synthetic peptide directed towards the middle region of human SRP54
Target	SRP54
Preservatives	Liquid. Purified antibody supplied in 1x PBS buffer with 0.09% (w/v) sodium azide and 2% sucrose.
Form/Appearance	Liquid. Purified antibody supplied in 1x PBS buffer with 0.09% (w/v) sodium azide and 2% sucrose.
Concentration	0.5 mg/ml
Storage	Maintain refrigerated at 2-8°C for up to 2 weeks. For long term storage store at -20°C in small aliquots to prevent freeze-thaw cycles.
Note	For research use only
Protein Sequence	Synthetic peptide located within the following region: ENFEIIIVDTSGRHKQEDSLFEEMLQVANAIQPDNIVYVMDASIGQACEA
Clonality	Polyclonal
MW	56kDa
Uniprot ID	P61011
NCBI	NP_003127
Expiration Date	12 months from date of receipt.



Western blot analysis of Hum. Placenta t...



Western blot analysis of human Placenta ...



Host: Rabbit, Target: SRP54, Positive co...