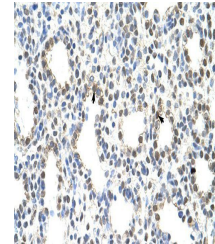


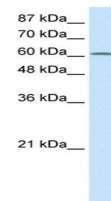
Product Datasheet

PRMT5 antibody (orb330097)

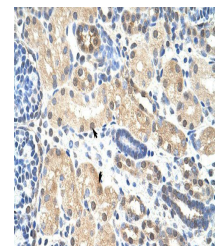
Description	Rabbit polyclonal antibody to PRMT5
Species/Host	Rabbit
Reactivity	Canine, Equine, Guinea pig, Human, Mouse, Rat, Zebrafish
Conjugation	Unconjugated
Tested Applications	IHC, WB
Immunogen	The immunogen is a synthetic peptide directed towards the N terminal region of human PRMT5
Target	PRMT5
Preservatives	Liquid. Purified antibody supplied in 1x PBS buffer with 0.09% (w/v) sodium azide and 2% sucrose.
Form/Appearance	Liquid. Purified antibody supplied in 1x PBS buffer with 0.09% (w/v) sodium azide and 2% sucrose.
Concentration	1.0 mg/ml
Storage	Maintain refrigerated at 2-8°C for up to 2 weeks. For long term storage store at -20°C in small aliquots to prevent freeze-thaw cycles.
Note	For research use only
Protein Sequence	Synthetic peptide located within the following region: FDFLCMPVFHPRFKREFIQEPAKNRPGPQTRSDLLLSGRDWNTLIVGKLS
Clonality	Polyclonal
MW	68kDa
Uniprot ID	O14744
NCBI	NP_001034708
Expiration Date	12 months from date of receipt.



Immunohistochemical staining of human Lu...



Western blot analysis of Jurkat cell lys...



Immunohistochemical staining of human Ki...