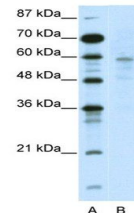


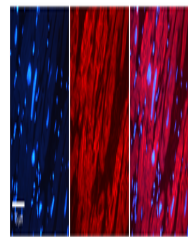
Product Datasheet

DMAP1 antibody (orb330049)

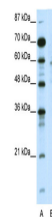
Description	Rabbit polyclonal antibody to DMAP1
Species/Host	Rabbit
Reactivity	Human
Conjugation	Unconjugated
Tested Applications	WB
Immunogen	The immunogen is a synthetic peptide directed towards the N terminal region of human DMAP1
Target	DMAP1
Preservatives	Liquid. Purified antibody supplied in 1x PBS buffer with 0.09% (w/v) sodium azide and 2% sucrose.
Form/Appearance	Liquid. Purified antibody supplied in 1x PBS buffer with 0.09% (w/v) sodium azide and 2% sucrose.
Concentration	1.0 mg/ml
Storage	Maintain refrigerated at 2-8°C for up to 2 weeks. For long term storage store at -20°C in small aliquots to prevent freeze-thaw cycles.
Note	For research use only
Protein Sequence	Synthetic peptide located within the following region: MATGADV RDILELGGPEGDAASGTISKKDIINPDKKKSKKSSETLTFKRP
Clonality	Polyclonal
MW	53kDa
Uniprot ID	Q9NPF5
NCBI	NP_061973
Expiration Date	12 months from date of receipt.



Western blot analysis of Jurkat cell lys...



Rabbit Anti-DMAP1 Antibody, Catalog Numb...



WB Suggested Anti-DMAP1 Antibody Titration...