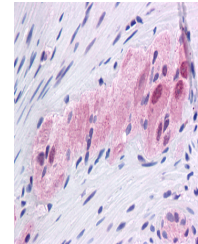


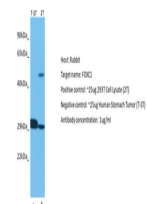
Product Datasheet

FOXC1 antibody (orb329956)

Description	Rabbit polyclonal antibody to FOXC1
Species/Host	Rabbit
Reactivity	Human
Conjugation	Unconjugated
Tested Applications	IHC, WB
Immunogen	The immunogen is a synthetic peptide directed towards the N terminal region of human FOXC1
Target	FOXC1
Preservatives	Liquid. Purified antibody supplied in 1x PBS buffer with 0.09% (w/v) sodium azide and 2% sucrose.
Form/Appearance	Liquid. Purified antibody supplied in 1x PBS buffer with 0.09% (w/v) sodium azide and 2% sucrose.
Concentration	0.5 mg/ml
Storage	Maintain refrigerated at 2-8°C for up to 2 weeks. For long term storage store at -20°C in small aliquots to prevent freeze-thaw cycles.
Note	For research use only
Protein Sequence	Synthetic peptide located within the following region: GGYTAMPAPMSVYSHPAHAEQYPGGMARAYGPYTPQPQPKDMVKPPYSYI
Clonality	Polyclonal
MW	57kDa
Uniprot ID	Q12948
NCBI	NP_001444
Expiration Date	12 months from date of receipt.



Colon,
myenteric
plexus.



Host: Rabbit,
Target: FOXC1,
Positive co...



WB Suggested
Anti-FOXC1
Antibody
Titration...