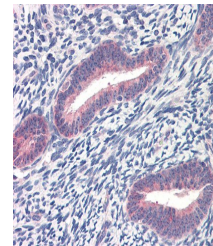


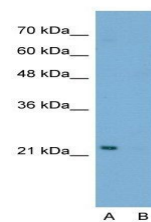
Product Datasheet

TWIST1 antibody (orb329955)

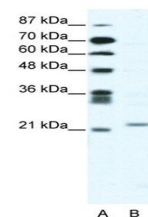
Description	Rabbit polyclonal antibody to TWIST1
Species/Host	Rabbit
Reactivity	Human
Conjugation	Unconjugated
Tested Applications	IHC, WB
Immunogen	The immunogen is a synthetic peptide directed towards the C terminal region of human TWIST1
Target	TWIST1
Preservatives	Liquid. Purified antibody supplied in 1x PBS buffer with 0.09% (w/v) sodium azide and 2% sucrose.
Form/Appearance	Liquid. Purified antibody supplied in 1x PBS buffer with 0.09% (w/v) sodium azide and 2% sucrose.
Concentration	1.0 mg/ml
Storage	Maintain refrigerated at 2-8°C for up to 2 weeks. For long term storage store at -20°C in small aliquots to prevent freeze-thaw cycles.
Note	For research use only
Protein Sequence	Synthetic peptide located within the following region: DKLSKIQTLKLAARYIDFLYQVLQSDDELDSKMASCSYVAHERLSYAFSVW
Clonality	Polyclonal
MW	21kDa
Uniprot ID	Q15672
NCBI	NP_000465
Expiration Date	12 months from date of receipt.



Immunohistochemical staining of human Ut...



Western blot analysis of Jurkat tissue u...



Western blot analysis of Jurkat cell lys...