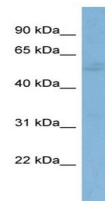


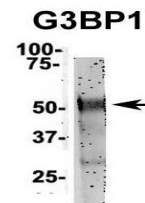
Product Datasheet

G3BP1 antibody (orb329937)

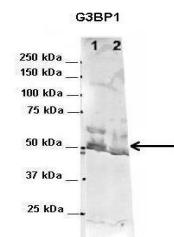
Description	Rabbit polyclonal antibody to G3BP1
Species/Host	Rabbit
Reactivity	Canine, Equine, Guinea pig, Human, Mouse, Rat
Conjugation	Unconjugated
Tested Applications	IP, WB
Immunogen	The immunogen is a synthetic peptide directed towards the N terminal region of human G3BP1
Target	G3BP1
Preservatives	Liquid. Purified antibody supplied in 1x PBS buffer with 0.09% (w/v) sodium azide and 2% sucrose.
Form/Appearance	Liquid. Purified antibody supplied in 1x PBS buffer with 0.09% (w/v) sodium azide and 2% sucrose.
Concentration	0.5 mg/ml
Storage	Maintain refrigerated at 2-8°C for up to 2 weeks. For long term storage store at -20°C in small aliquots to prevent freeze-thaw cycles.
Note	For research use only
Protein Sequence	Synthetic peptide located within the following region: RFMQTFVLAPEGSVANKFYVHNDIFRYQDEVFGGFVTEPQEESEEEVEEP
Clonality	Polyclonal
MW	52kDa
Uniprot ID	Q13283
NCBI	NP_005745
Expiration Date	12 months from date of receipt.



Western blot analysis of HT1080 cell lys...



Western blot analysis of NT2 CELL/BRAIN ...



Western blot analysis of human NT-2, mou...