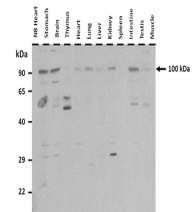


Product Datasheet

E2F7 antibody (orb329926)

Description	Rabbit polyclonal antibody to E2F7
Species/Host	Rabbit
Reactivity	Mouse
Conjugation	Unconjugated
Tested Applications	WB
Immunogen	The immunogen is a synthetic peptide directed towards the N terminal region of mouse E2F7
Target	E2F7
Preservatives	Liquid. Purified antibody supplied in 1x PBS buffer with 0.09% (w/v) sodium azide and 2% sucrose.
Form/Appearance	Liquid. Purified antibody supplied in 1x PBS buffer with 0.09% (w/v) sodium azide and 2% sucrose.
Concentration	1.0 mg/ml
Storage	Maintain refrigerated at 2-8°C for up to 2 weeks. For long term storage store at -20°C in small aliquots to prevent freeze-thaw cycles.
Note	For research use only
Protein Sequence	Synthetic peptide located within the following region: LFRPIENKEDAFVNSLQLDVAGDGAVDEYEKQRPSRKQKSLGLLCQKFLA
Clonality	Polyclonal
MW	100 kDa
Uniprot ID	Q6S7F2
NCBI	NP_848724
Expiration Date	12 months from date of receipt.



25 ug of the indicated Mouse whole cell ...



WB Suggested Anti-E2F7 Antibody Titratio...